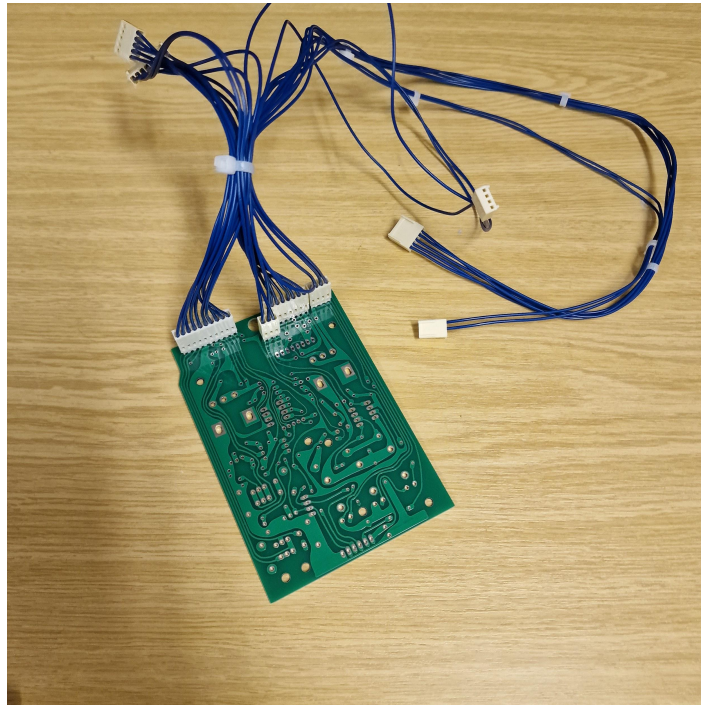


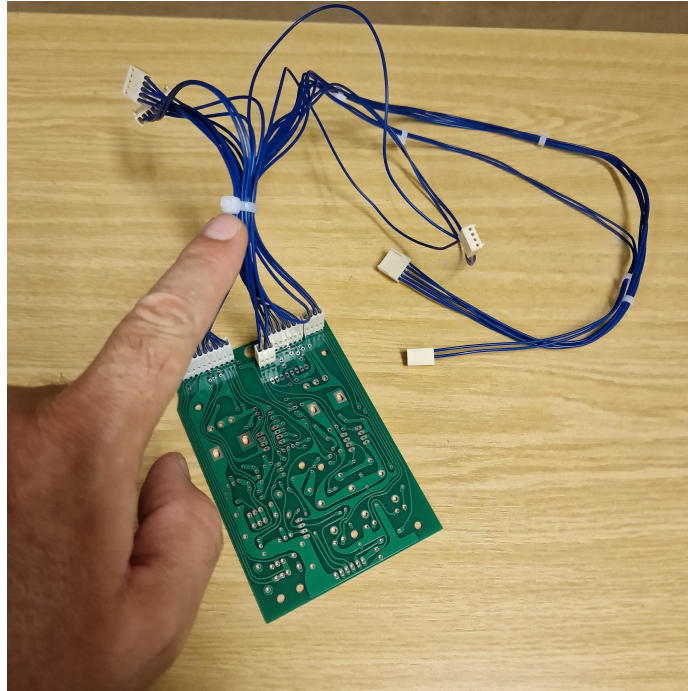
RE101 WIRE LOOM

Installation of the wire loom is relatively straight forward, there is a small amount of preparation to do.

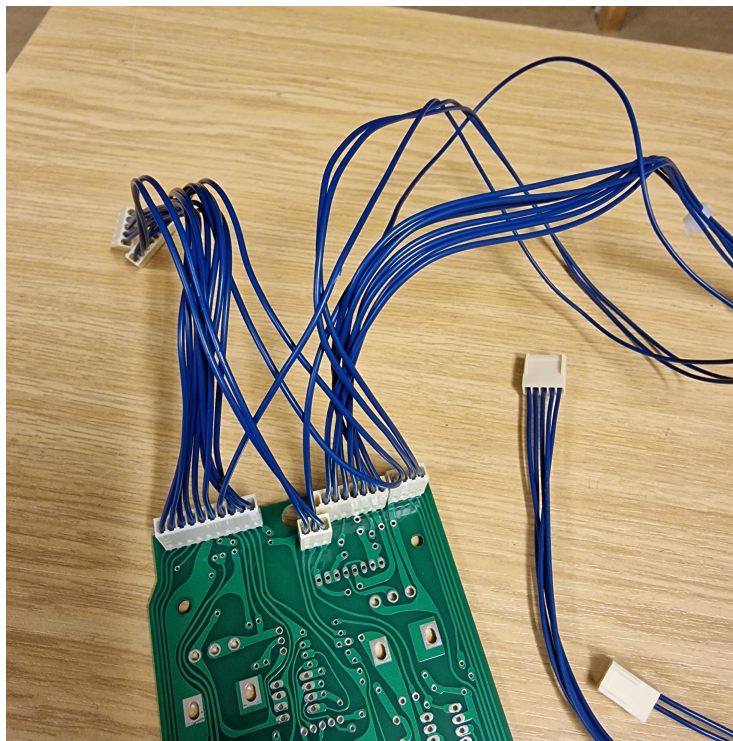
BLUE CABLE



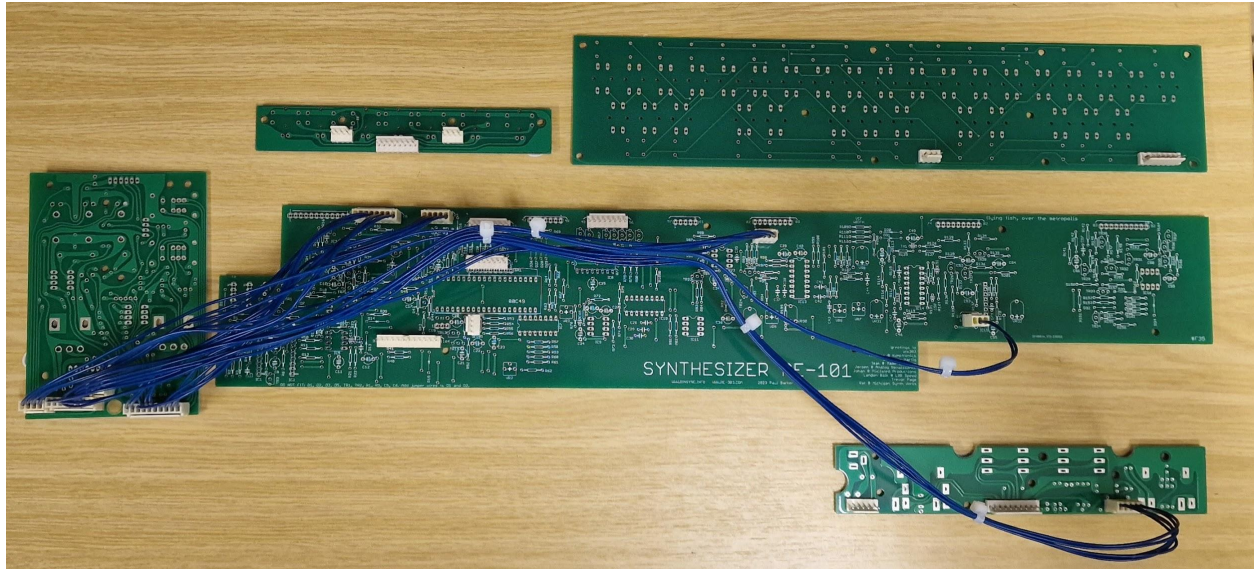
First connect the end with 4 headers to the bender board, note that one of the connectors has an empty channel



We need to remove this cable tie, but do this after connecting to the bender board as it will be simpler to connect the rest then.

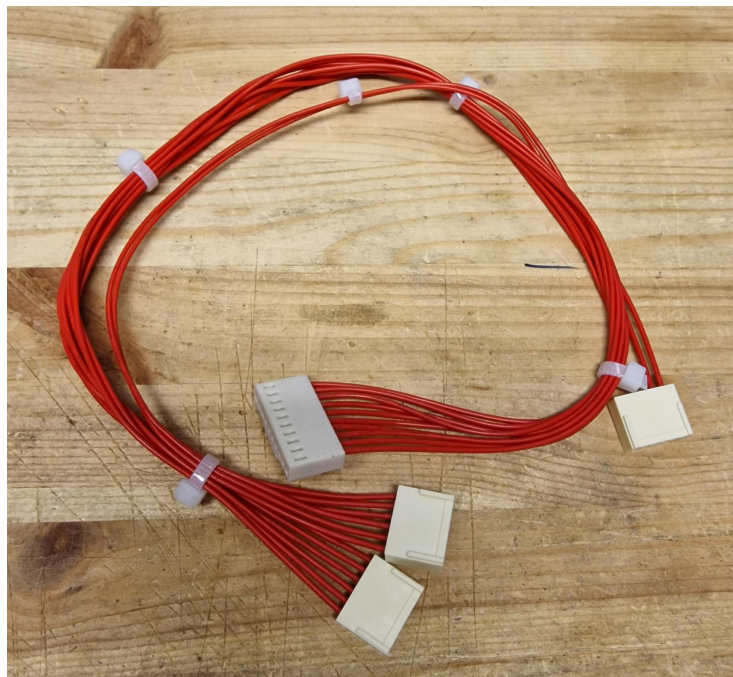


The blue cable with zip tie removed and connected to bender board, the connector third from left (in this picture) is the one with the empty channel.

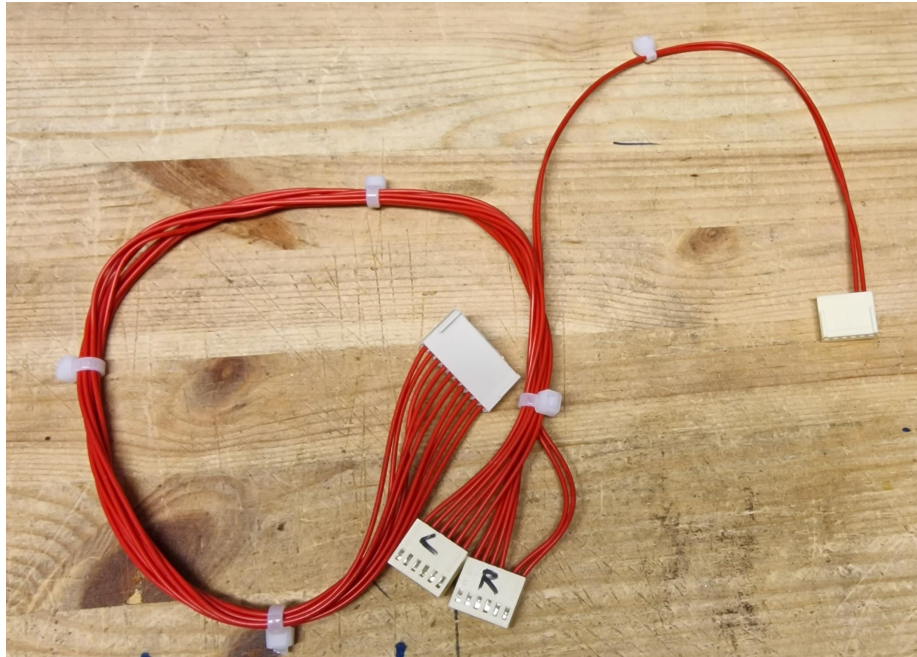


You can now connect the rest of the blue cable

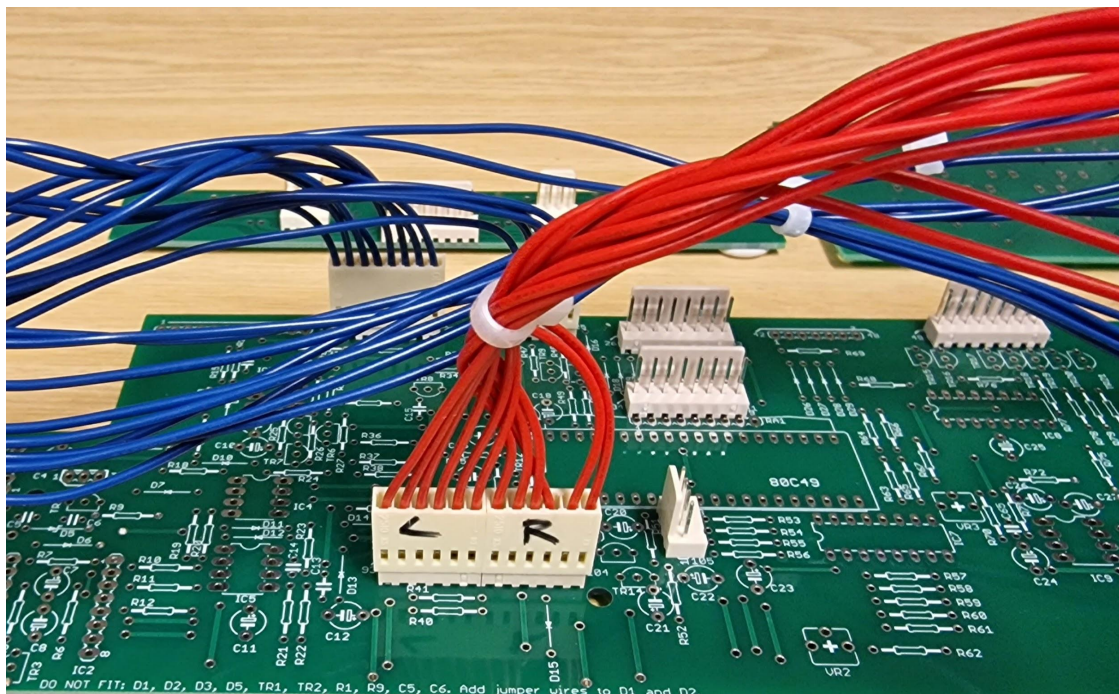
RED CABLE

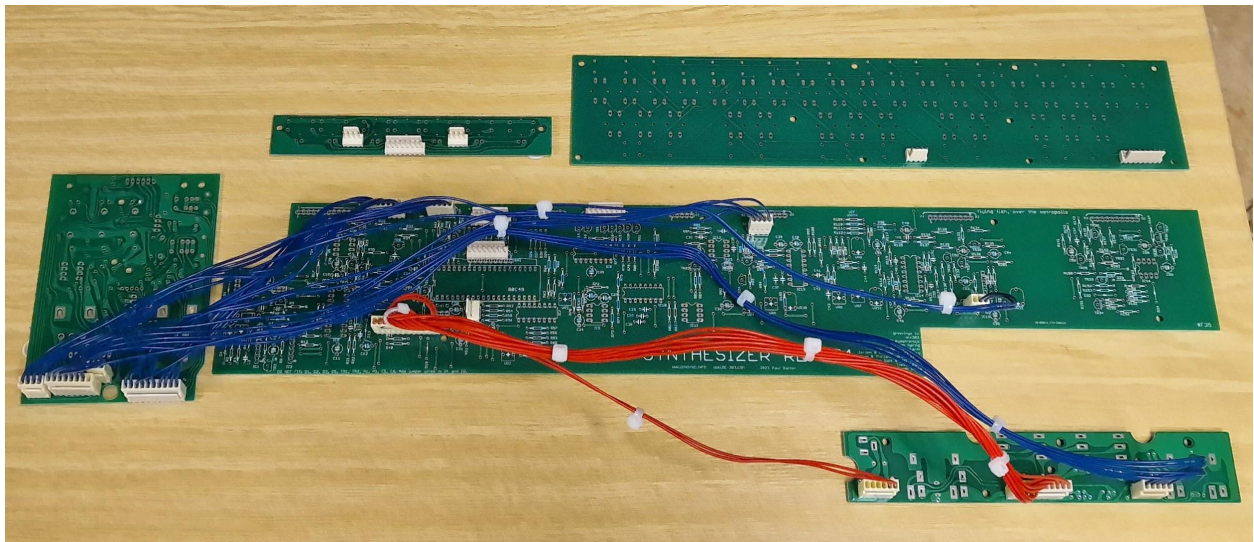


The red cable uses two 6pins headers instead of a 12pin. So we need to designate which header is left and which is right.



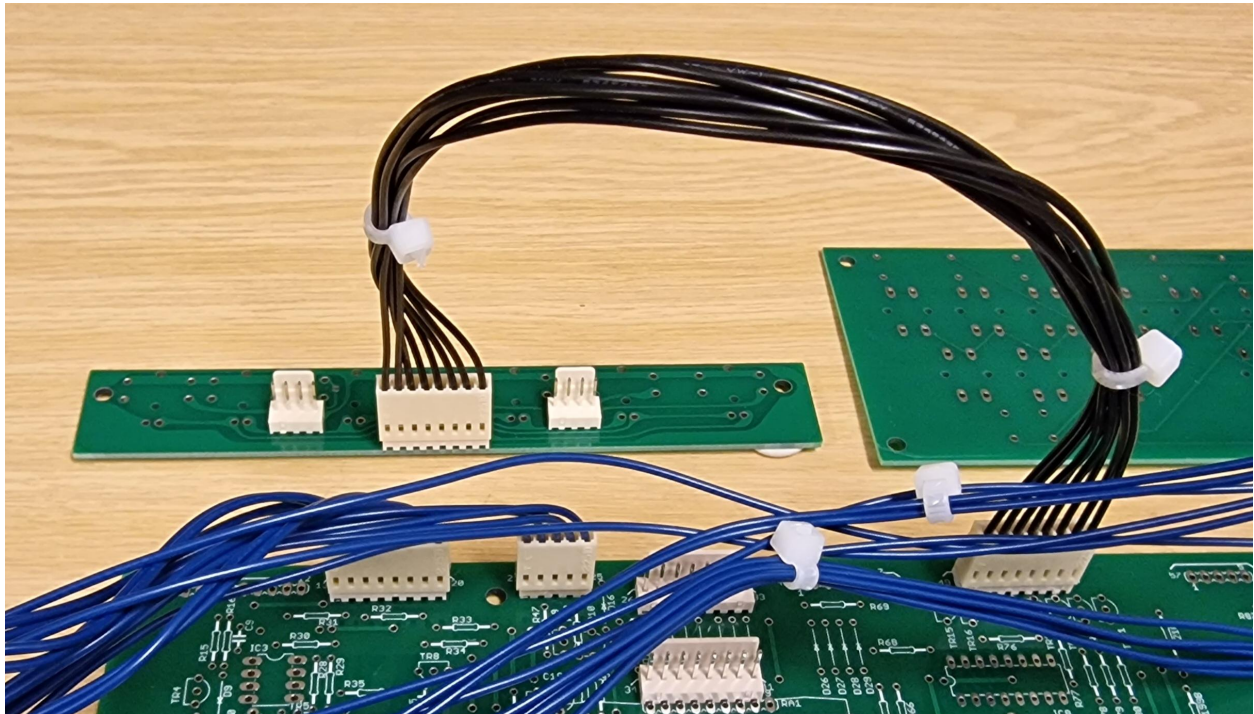
The header that leads to the header with 2 pins (power) must be placed on the right. As you can see I gently pulled the cable to see that it was the one leading to the power header. Mark this one with an R, and the other with an L (notice the header orientation, you can see pin holes on the marked side)





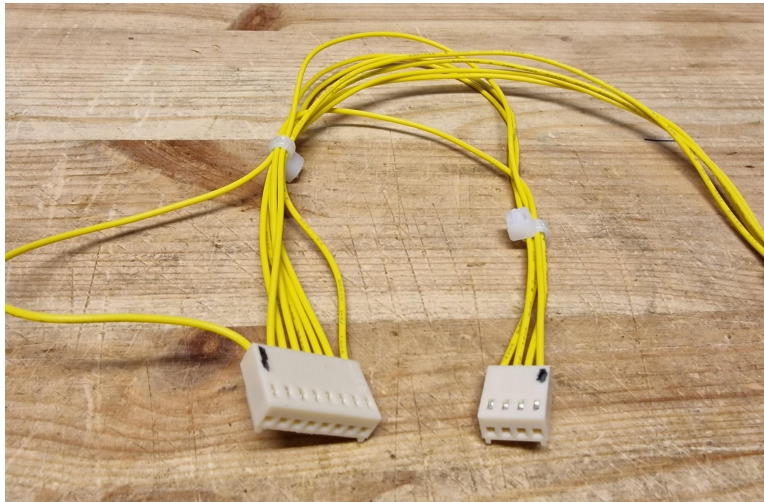
Blue and red cable installed

BLACK CABLE

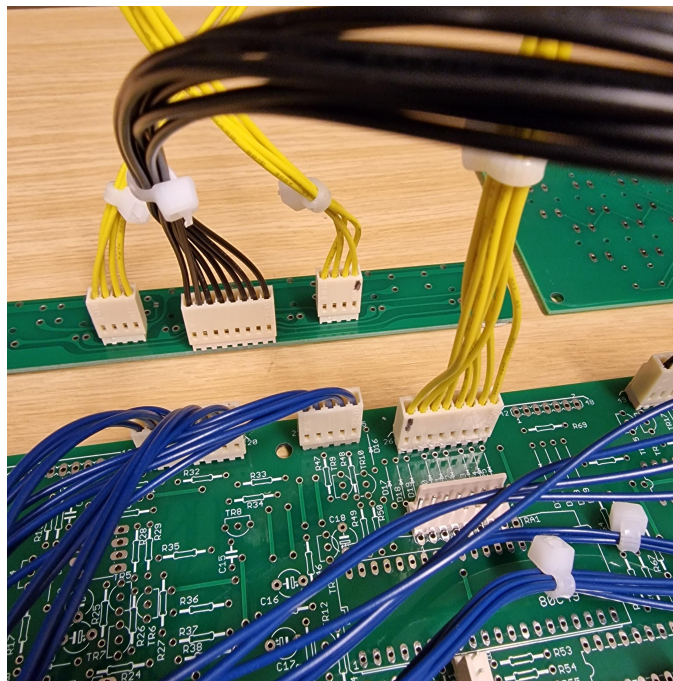


This one is simple, just connect it up.

YELLOW CABLE

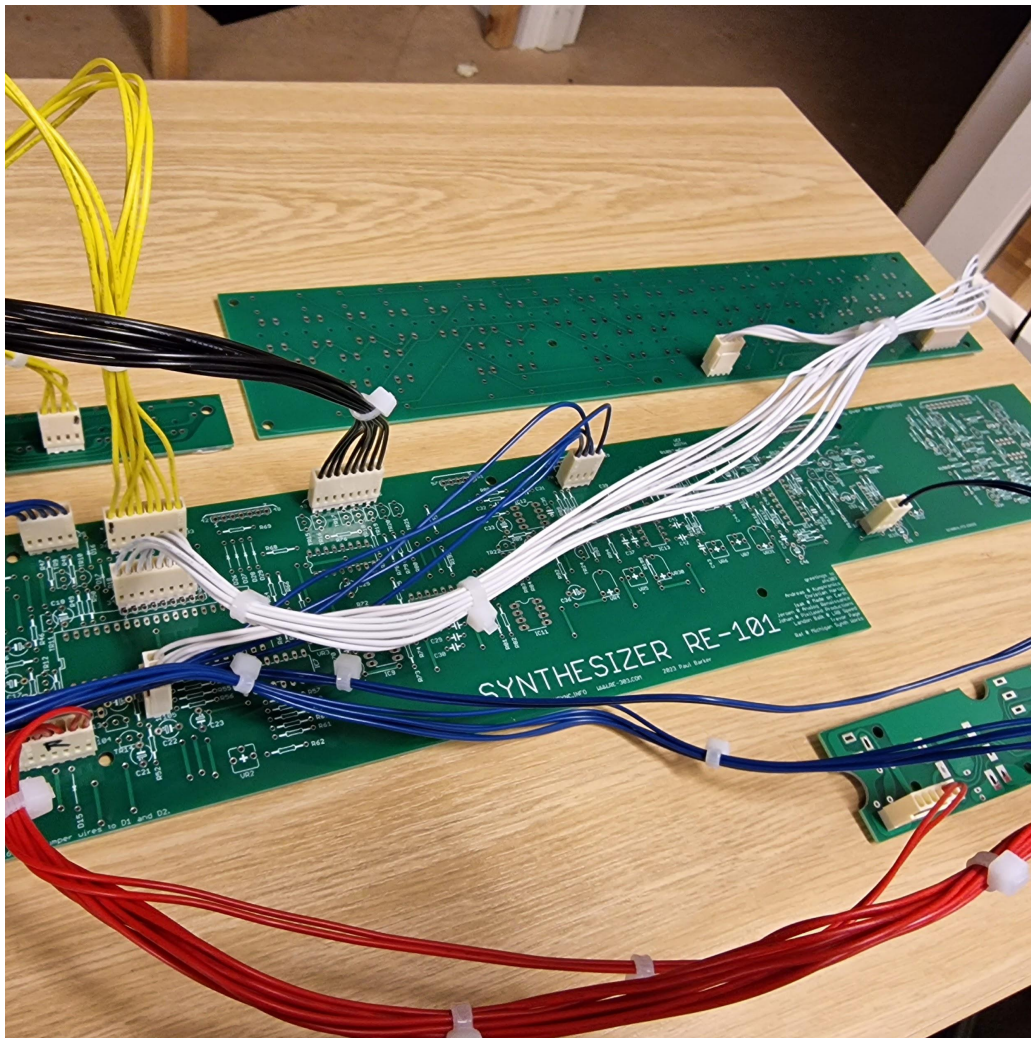


The yellow cable has an 8 pin header into two 4 pin headers. Make a mark on pin 1 of the 8 pin header, pull the cable gently and then mark the header it is connected to as shown in the picture.

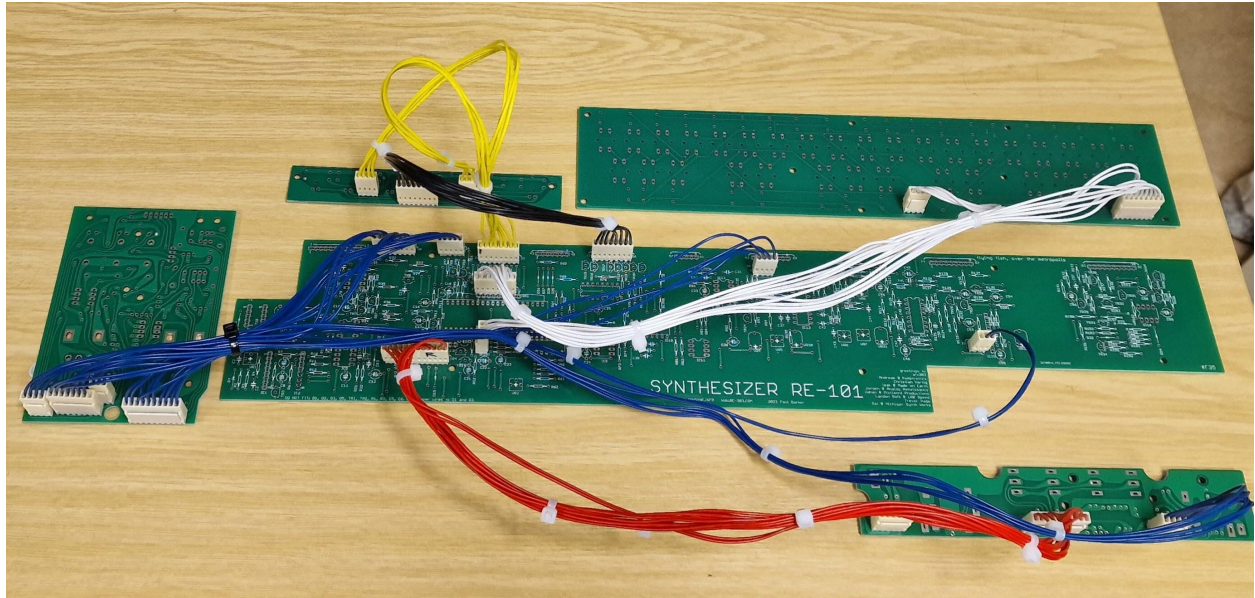


Install the yellow cable as shown, check your marks line up so that mainboard pin 26 connects to seq board pin 112.

WHITE CABLE



This one is simple, just connect up the headers as shown. All done!



Overview of installed cables